

KIT(V560DEL)

Catalog Number: 26289

Gene Symbol: C-Kit; CD117; KIT; PBT; SCFR

Description: Anti-KIT(V560DEL) Mouse Monoclonal Antibody

Background: Tyrosine-protein kinase Kit, also known as proto-oncogene c-Kit or CD117 or Mast/stem cell growth factor receptor (SCFR), is a receptor tyrosine kinase protein that in humans is encoded by the KIT gene. Activating mutations in this gene are associated with gastrointestinal stromal tumors, testicular seminoma, mast cell disease, melanoma, acute myeloid leukemia, while inactivating mutations are associated with the genetic defect piebaldism.

Immunogen: A synthetic peptide from the internal region of KIT, which includes the deletion of V560, human origin

Tested Applications: ELISA, WB, IF, IHC

Recommended Dilutions:

ELISA:	1:1000-1:5000
WB:	1:500-1:1000
IF:	1:50-1:100
IHC:	1:50-1:100

Concentration: 1.0 mg/ml

Host: Mouse

Clonality: Monoclonal

Isotype: IgG

Purity: Purified from ascites

Format: Liquid

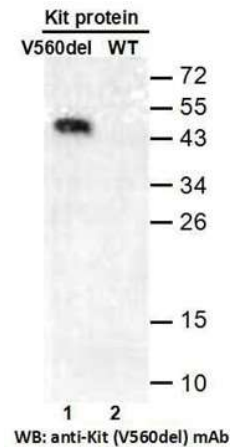
Preservative: No

Constituents: PBS (without Mg²⁺ and Ca²⁺), pH7.4, 150 mM NaCl, 50% glycerol

Species Reactivity: Recognizes V560DEL mutant, but not wild-type KIT of vertebrates.

Storage Conditions: Store at -20°C. Avoid repeated freezing and thawing

Western blot:

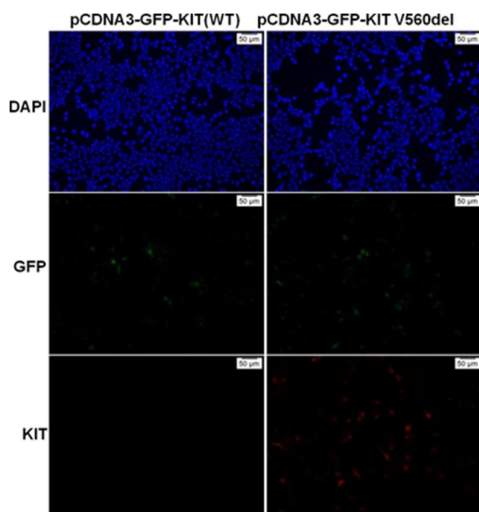


Western blot analysis of recombinant KIT (V560DEL) and wild type proteins.

Purified His-tagged KIT (V560DEL) protein (lane 1) and corresponding wild type protein (lane 2) were blotted with anti-KIT (V560DEL) monoclonal antibody (Cat. # 26289).

FOR RESEARCH USE ONLY. NOT FOR DIAGNOSTIC APPLICATIONS

Immunofluorescence:



Immunofluorescence of cells expressing KIT proteins with anti-KIT (V560DEL) antibody.

HEK293T cells were transfected with pCDNA3-GFP-KIT (WT) plasmid (left column) or pCDNA3-GFP-KIT (V560DEL) plasmid (right column), then fixed and stained with anti-KIT (V560DEL) monoclonal antibody (Cat. # 26289).

FOR RESEARCH USE ONLY. NOT FOR DIAGNOSTIC APPLICATIONS